



GOVERNANCE AND ORGANIZATIONAL STRUCTURE

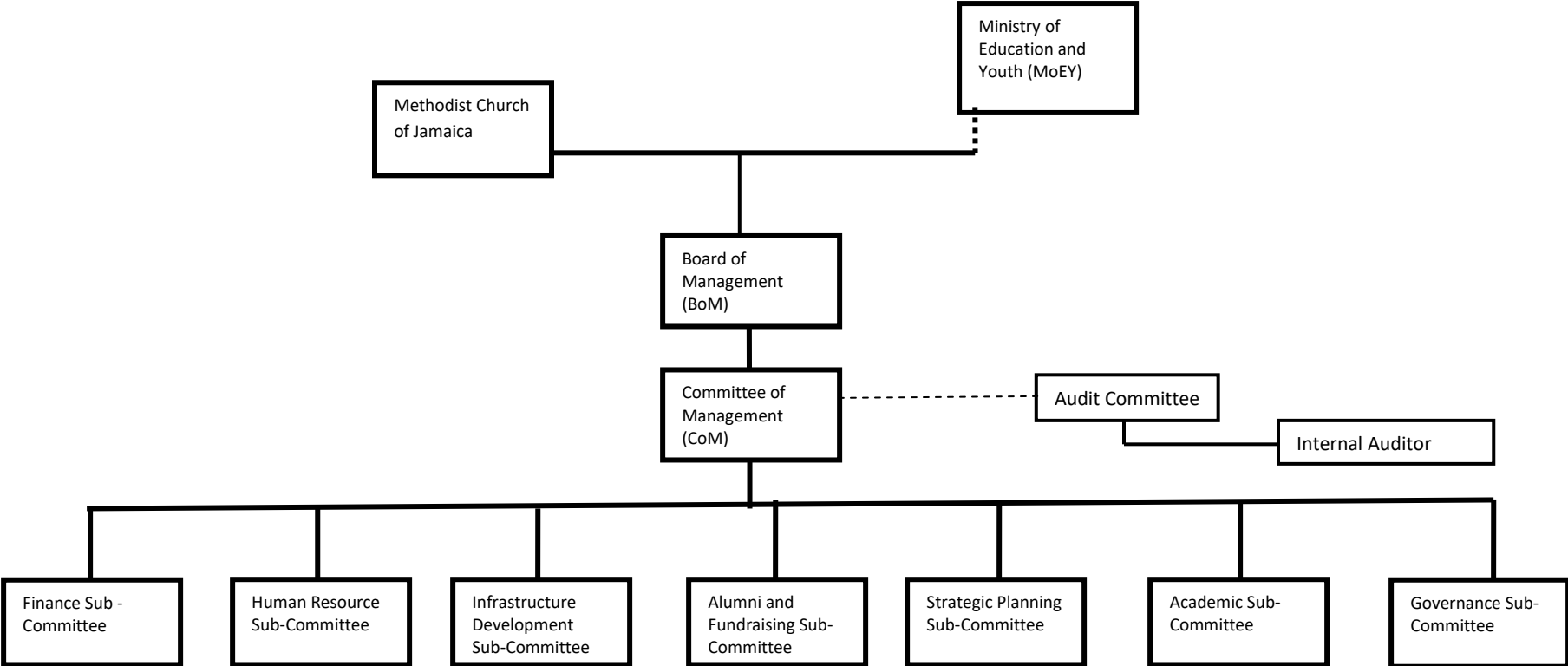
## **PREFACE TO THE GOVERNANCE CHART FOR THE EXCELSIOR COMMUNITY COLLEGE**

Excelsior Community College is a Methodist institution for Higher Learning. It is registered with the Ministry of Education and Youth (MoEY) and is a government grant-aided institution operated by the Methodist Church, Jamaica District. The MOEY, with the recommendation from the Methodist Church appoints the Joint Board of Management. The Joint Board of Management presides over the Excelsior Education Centre (EXED) Centre which is comprised of the Primary and Infant School, High School and the Community College.

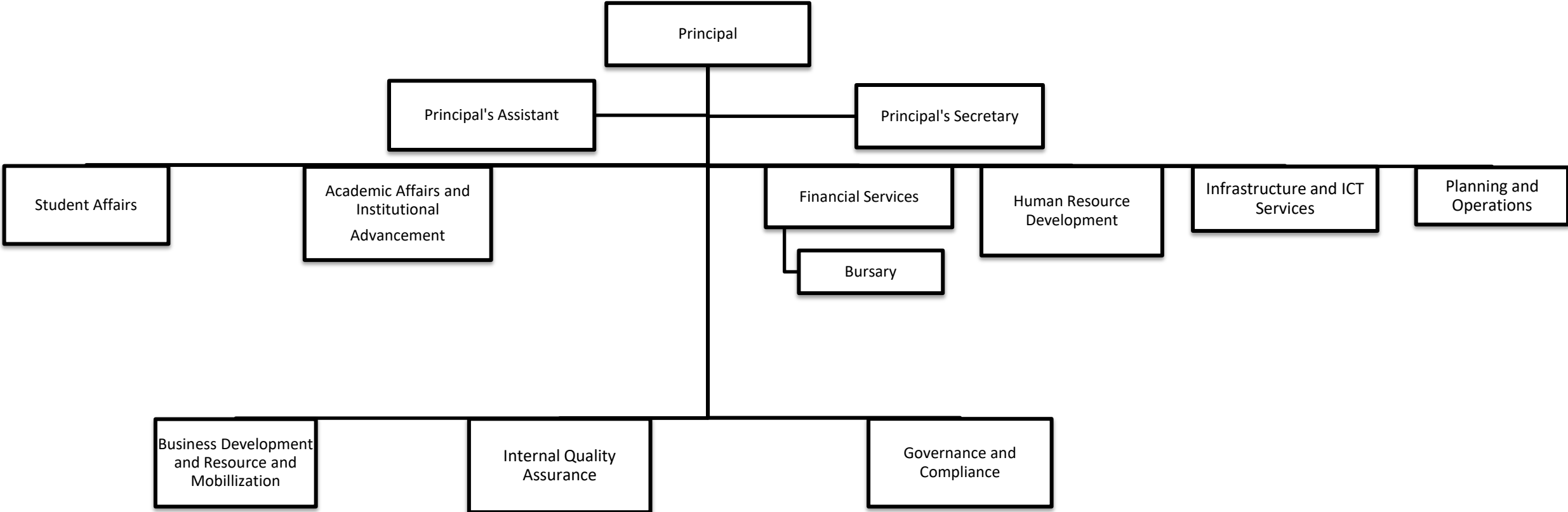
The Board delegates to the Committee of Management of the College, the power and authority to carry out on its behalf such duties as the Board of Management may determine. The Committee of Management is governed by the Education Act of 1965 and the Education Regulations of 1980. The Committee of Management appoints various sub-committees to provide technical advice and support its governance and planning role. Currently these sub-committees are Human Resources, Infrastructure Development, Finance, Strategic Planning, Governance, Academic and Alumni Relations and Fundraising. An Audit Committee was also commissioned.

**EXCELSIOR COMMUNITY COLLEGE**

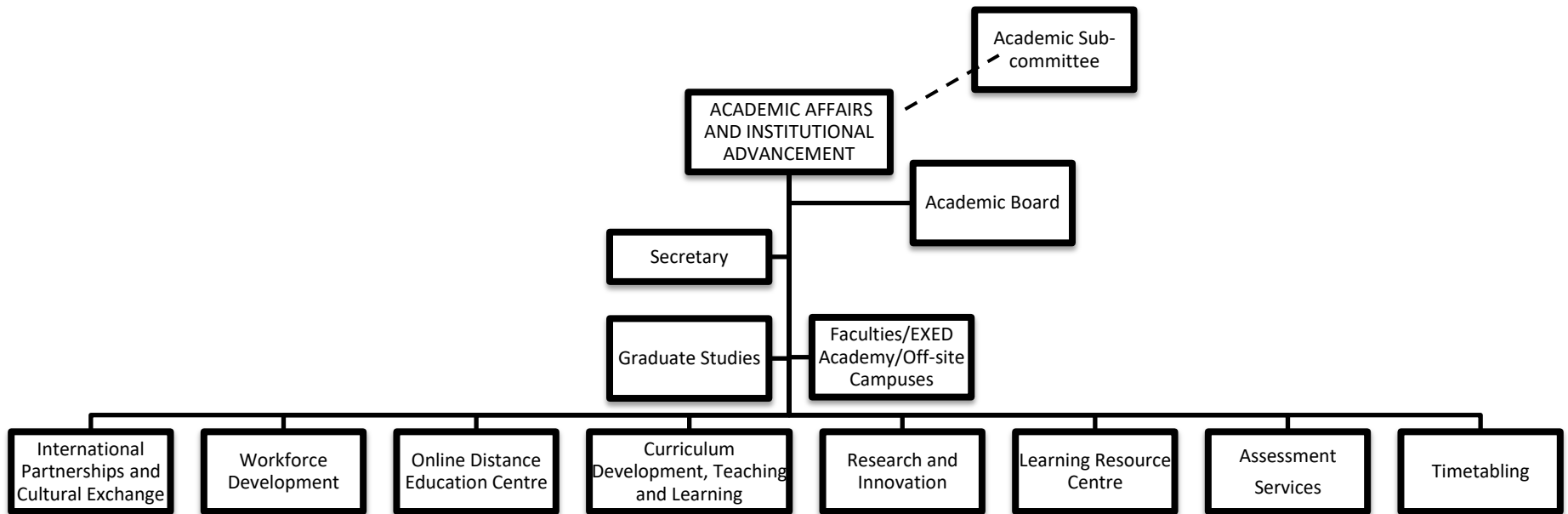
**GOVERNANCE STRUCTURE**



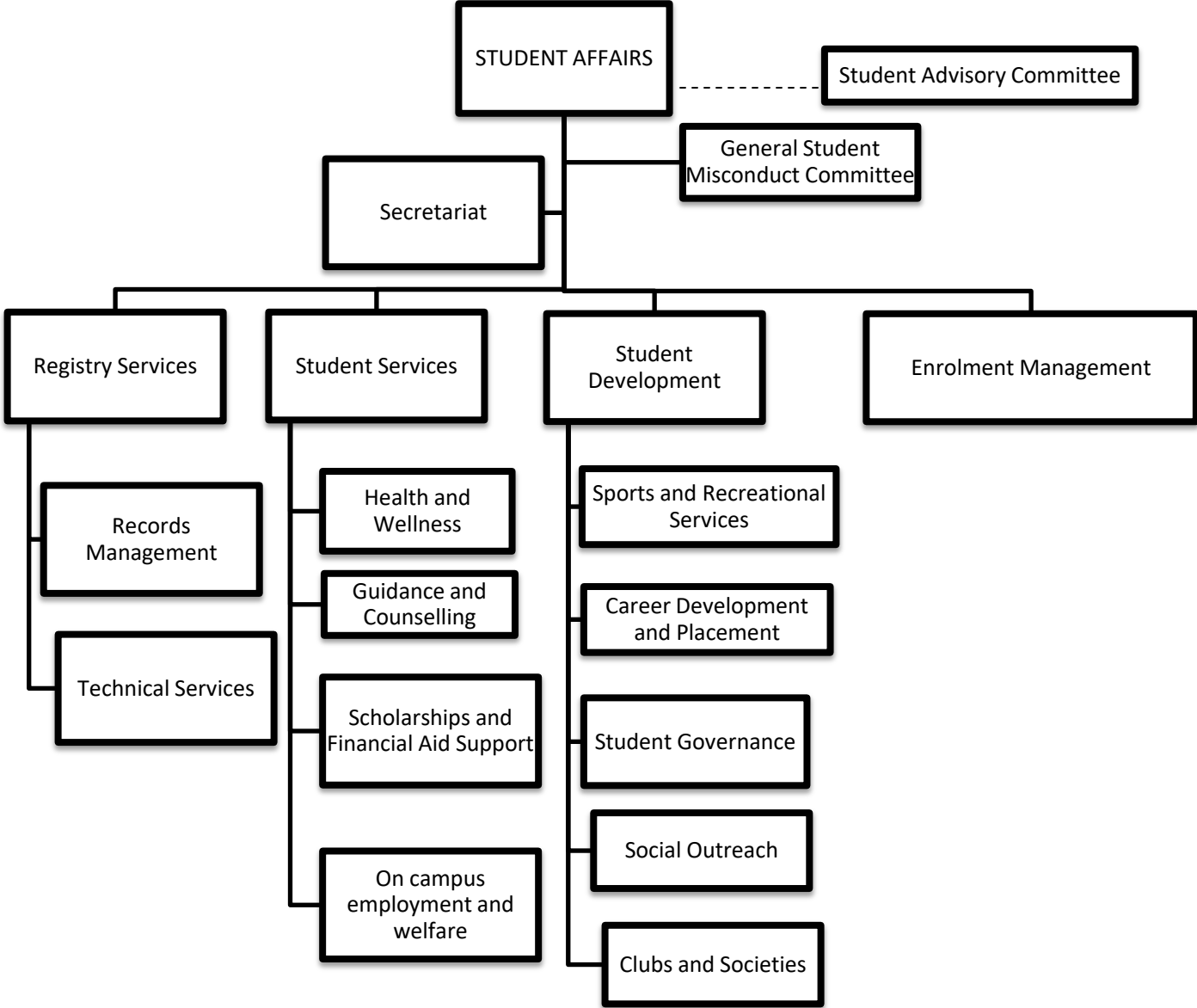
EXCELSIOR COMMUNITY COLLEGE ORGANIZATIONAL STRUCTURE



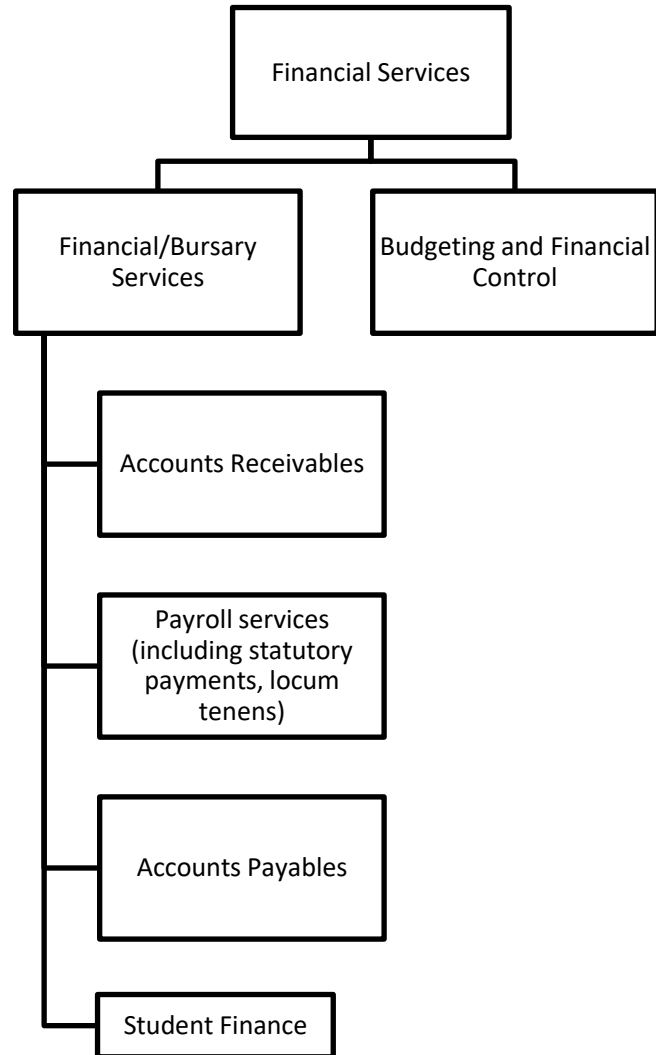
## ACADEMIC AFFAIRS AND INSTITUTIONAL ADVANCEMENT



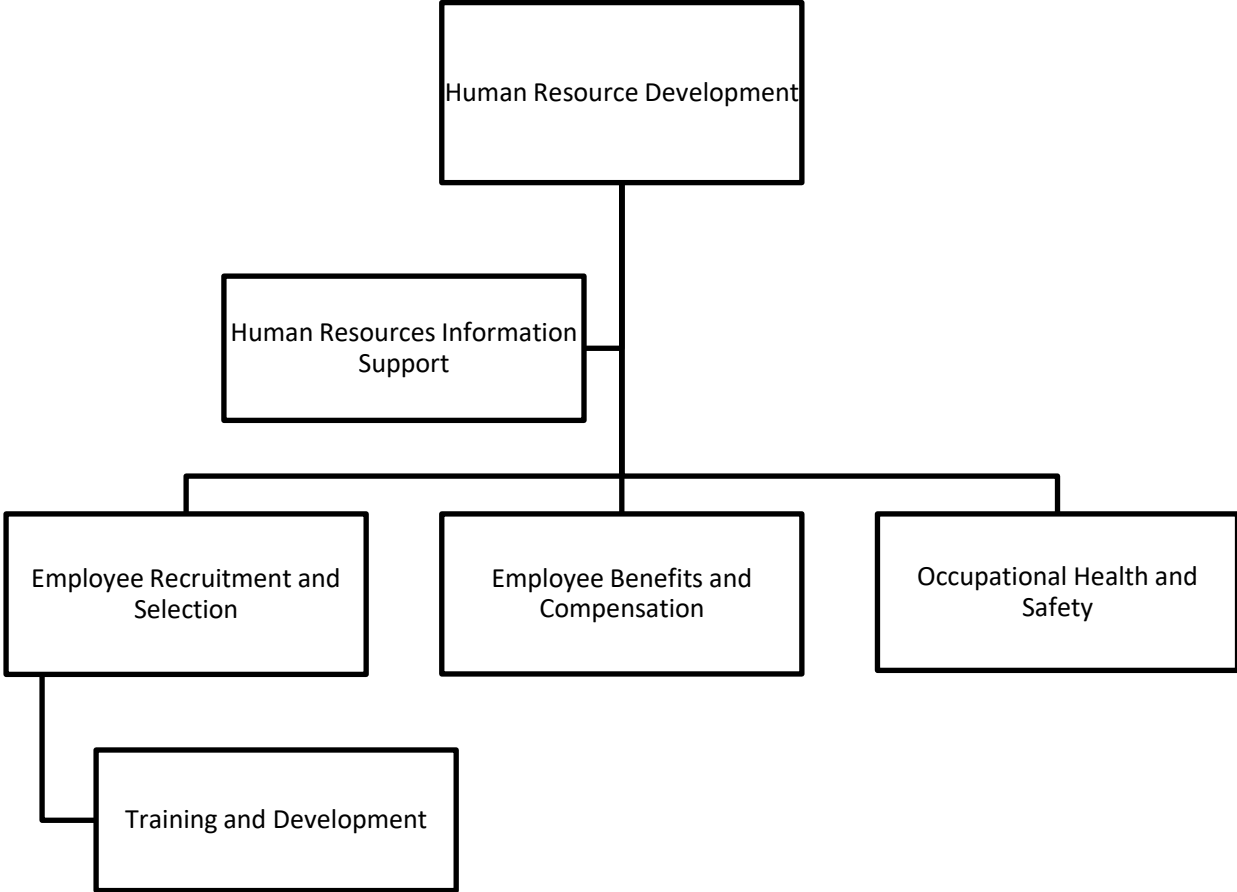
**STUDENT AFFAIRS DIVISION**



## FINANCE

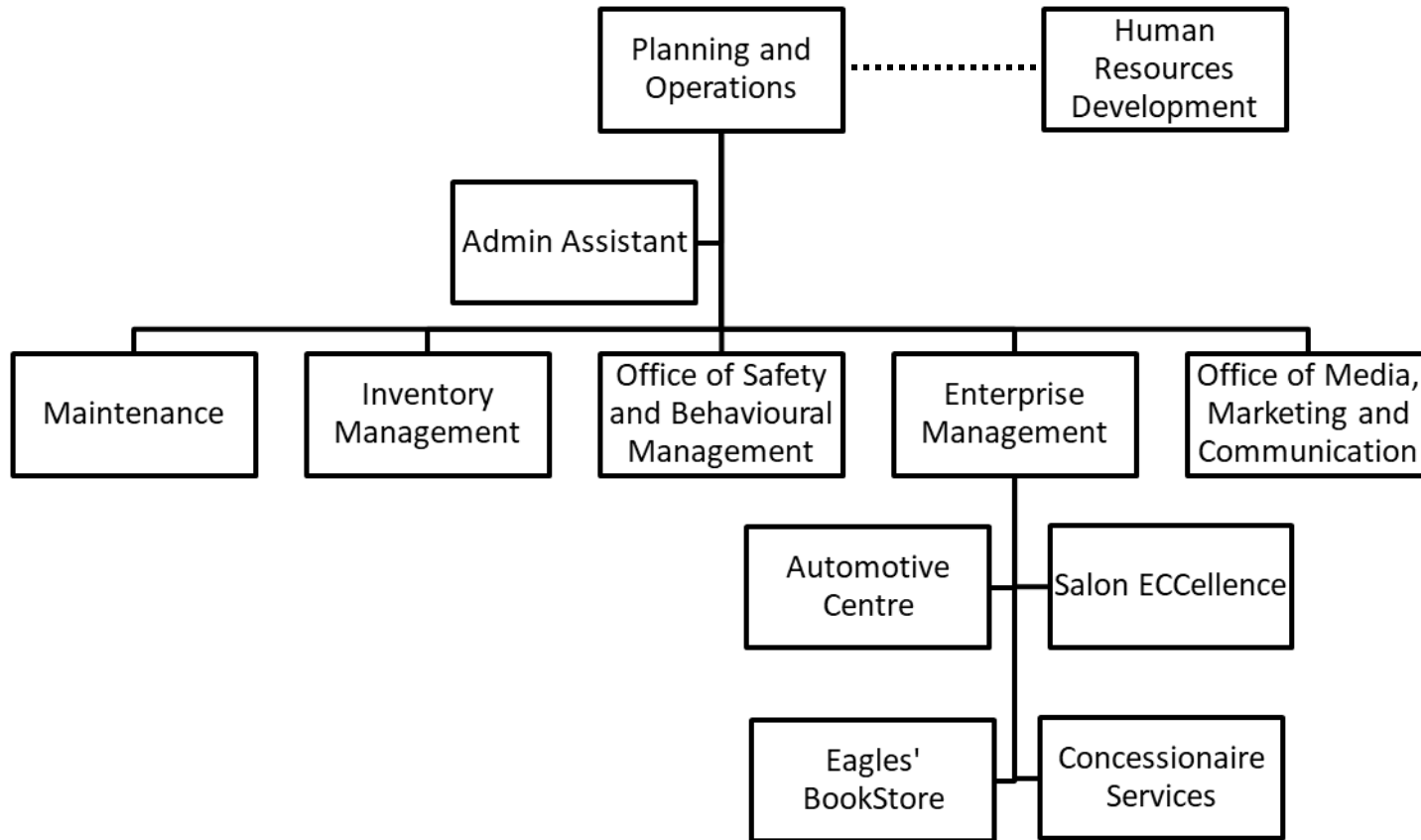


**HUMAN RESOURCES AND ADMINISTRATION**

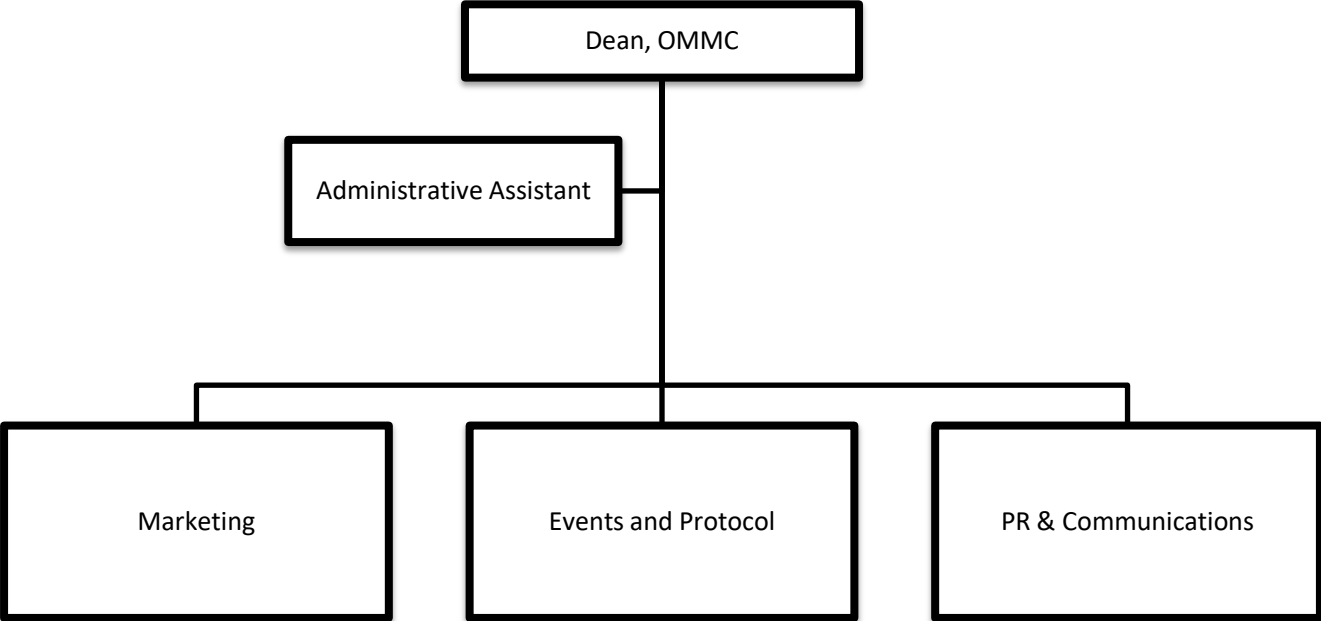




## PLANNING AND OPERATIONS



**OFFICE OF MARKETING, MEDIA AND COMMUNICATION (OMMC)**



**INFRASTRUCTURE AND ICT SERVICES**

